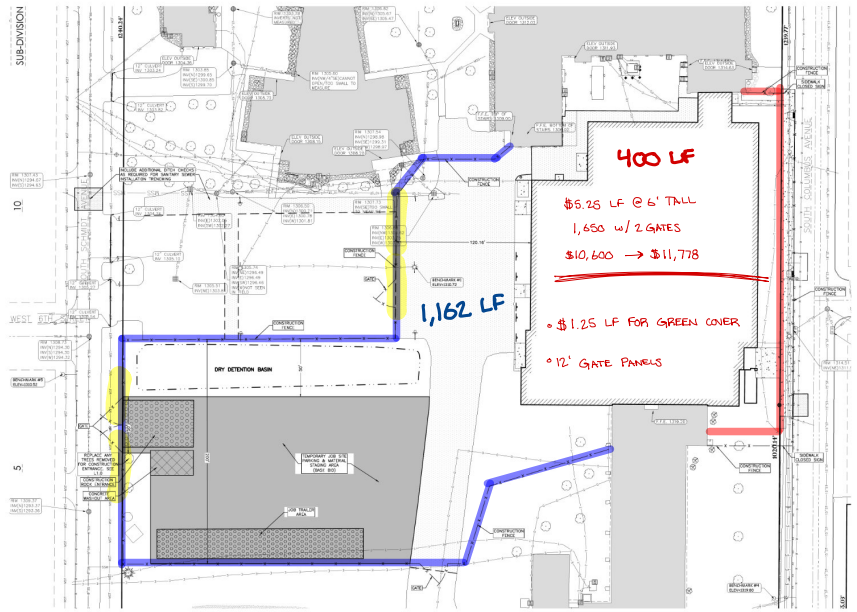


**CONSTRUCTION STAGING**

**Columbus Catholic Schools  
 Gymnasium Addition  
 City of Marshfield  
 Wood CO, Wisconsin**

Civil Engineering  
 Landscape Architecture  
 4641 Douglas Court  
 Shevlin Park, WI 54481  
 (715) 466-9979 P.O. Box 10222 (P.O.)



SUB-DIVISION

10

WEST CITY

10

WEST CITY

10

**BENCHMARK:**

- BENCHMARK REFERENCE TO MARK ON DESIGN
- BENCHMARK 1001-2000-1000 (NORTH SIDE) AND 1000-1000-1000 (EAST SIDE) OF THE EAST SIDE OF THE SOUTH SIDE SECTION = 1001.12
- BENCHMARK 1001-2000-1000 (NORTH SIDE) AND 1000-1000-1000 (EAST SIDE) OF THE WEST SIDE OF THE SOUTH SIDE SECTION = 1001.12
- BENCHMARK 1001-2000-1000 (NORTH SIDE) AND 1000-1000-1000 (EAST SIDE) OF THE WEST SIDE OF THE SOUTH SIDE SECTION = 1001.12
- BENCHMARK 1001-2000-1000 (NORTH SIDE) AND 1000-1000-1000 (EAST SIDE) OF THE WEST SIDE OF THE SOUTH SIDE SECTION = 1001.12
- BENCHMARK 1001-2000-1000 (NORTH SIDE) AND 1000-1000-1000 (EAST SIDE) OF THE WEST SIDE OF THE SOUTH SIDE SECTION = 1001.12
- BENCHMARK 1001-2000-1000 (NORTH SIDE) AND 1000-1000-1000 (EAST SIDE) OF THE WEST SIDE OF THE SOUTH SIDE SECTION = 1001.12

**UTILITY DISCLAIMER:**

PRIVATE UTILITIES OR SUBSTANCES SHOWN HEREON WERE OBTAINED FROM VISUAL INSPECTION, FIELD INVESTIGATION, AND/OR EXISTING RECORDS AND LOCATIONS THERE SHOWN ARE GUARANTEED BY US ONLY. FIELD AND/OR RECORD DATA ON ANY UTILITIES SHOWN HEREON IS NOT GUARANTEED. LOCATIONS SHOWN HEREON ARE APPROXIMATE AND SHOULD BE VERIFIED BY THE USER. THE USER SHALL BE RESPONSIBLE FOR VERIFYING THE LOCATION OF UTILITIES AND SUBSTANCES SHOWN HEREON. THE ENGINEER HAS NOT CONDUCTED ANY FIELD AND/OR RECORD DATA ON ANY UTILITIES SHOWN HEREON. THE USER SHALL BE RESPONSIBLE FOR VERIFYING THE LOCATION OF UTILITIES AND SUBSTANCES SHOWN HEREON. THE ENGINEER HAS NOT CONDUCTED ANY FIELD AND/OR RECORD DATA ON ANY UTILITIES SHOWN HEREON. THE USER SHALL BE RESPONSIBLE FOR VERIFYING THE LOCATION OF UTILITIES AND SUBSTANCES SHOWN HEREON.

